

# Woolly Thoughts

THE WORLD OF  
**ILLUSION KNITTING**  
where nothing is quite what it seems

*Illusion Techniques & Samples*



## *Illusion Checkered Circle*

*An illusion knitting sample  
designed by*

*Steve Plummer & Pat Ashforth*

## *Illusion Checkered Circle*

This design looks more complicated than many of our other samples. It is no more difficult to knit. It was originally intended as a laptop cover. You could make it rectangular, like the one shown, or you could omit the sides of the chart to make it square, making it suitable for a washcloth or afghan block.

### **Yarn**

You can use any thickness of smooth(ish) yarn. The illusion will show up however thick or thin the yarn. It may not show if you use a textured, or variegated, yarn. The choice of yarn will affect the overall size of the square.

The rectangle in the photos was made in DK yarn and used about 100 metres (110 yards) in each of the two colours. Extra is needed for the borders.

### **Needles**

The effect works best if the work is fairly tight. Try needles one size smaller than recommended for your chosen yarn.

### **Size and tension**

These will vary according to the yarn you choose. Using DK yarn and a tension of 5 stitches to the inch it will be approximately 40 cm (16") by 30 cm (12").

### **Using the chart**

There are 60 ridges (not rows!). Ridges and stitches are marked, with red lines, in groups of ten so that you can keep your place on the chart. Use markers on your needle to correspond.

There are three colours on the chart but you are only using two colours of yarn.

White on the chart always represents purl stitches. You could be using either colour of yarn to work these stitches. The working colour is determined by the colour of the current ridge. All other coloured stitches are knit stitches. Use Light to knit the light grey stitches; use Dark to knit the dark grey stitches.

You always work two rows (one ridge) of Dark followed by two rows (one ridge) of Light.

The sequence of working is:

- Using Dark, knit
- Using Dark, follow the chart
- Using Light, knit
- Using Light, follow the chart

Each time you complete a sequence of four rows you have added two ridges.

### **Special note**

The right side of the work is always knit. The chart is only needed for wrong-side rows. When you look at the chart you are seeing the right side and need to work from left to right for wrong side rows.

### **Note about other patterns**

Our more complex patterns often have several pages of charts. They are given in various formats so you can choose which to use on paper, on your screen, or on a tablet or phone.

## *Illusion Checkered Circle - Method*

Every stripe on the chart represents two rows of knitting. Every right side row is knit. You only need the chart for the wrong side rows.

Using Dark cast on 80 stitches.

(If you want to make a square cast on 60 stitches and omit the first ten, and last ten, stitches. Use the part of the chart between the yellow lines.)

- Ridge 1 (Dark):* Row 1: The cast on row counts as the first row of the first ridge.  
Row 2: Follow the chart. Knit the coloured stitches and purl the white stitches.  
(The chart shows p4, k6, p6, k6, p6, k6, p6, k6, p6, k6, p6, k6, p6, k4)
- Ridge 2 (Light):* Row 1: Knit.  
Row 2: Follow the chart. Knit the coloured stitches and purl the white stitches.  
(The chart shows p4, k6, p6, k6, p6, k6, p6, k6, p6, k6, p6, k6, p6, k4)
- Ridge 3 (Dark):* Row 1: Knit.  
Row 2: Follow the chart. Knit the coloured stitches and purl the white stitches.  
(The chart shows k4, p6, k6, p6, k6, p6, k6, p6, k6, p6, k6, p6, k6, p4)
- Ridge 4 (Light):* Row 1: Knit.  
Row 2: Follow the chart. Knit the coloured stitches and purl the white stitches.  
(The chart shows k4, p6, k6, p6, k6, p6, k6, p6, k6, p6, k6, p6, k6, p4)
- Ridges 5 - 8:* Repeat Ridges 1 - 4.
- Ridges 9 - 11:* Repeat Ridges 1 - 3.
- Ridge 12 (Light):* Row 1: Knit.  
Row 2: Follow the chart. Knit the coloured stitches and purl the white stitches.  
(The chart shows k4, p6, k6, p6, k6, p6, k4, p2, k2, p4, k6 ...)
- Ridge 13 (Dark):* Row 1: Knit.  
Row 2: Follow the chart. Knit the coloured stitches and purl the white stitches.  
(The chart shows p4, k6, p6, k6, p6, k6, p4, k2, p2, k4, p6 ...)

Continue in this way, following the chart. Cast off loosely on the second row of the last ridge.

### **To neaten the edges**

With right side of work facing, pick up one stitch from the end of each ridge, along one side. Cast off on the next row. Complete the other side to match.

You can add wider garter stitch borders, if you wish, as in the photograph below.

This is what you see when you look from directly in front.



60

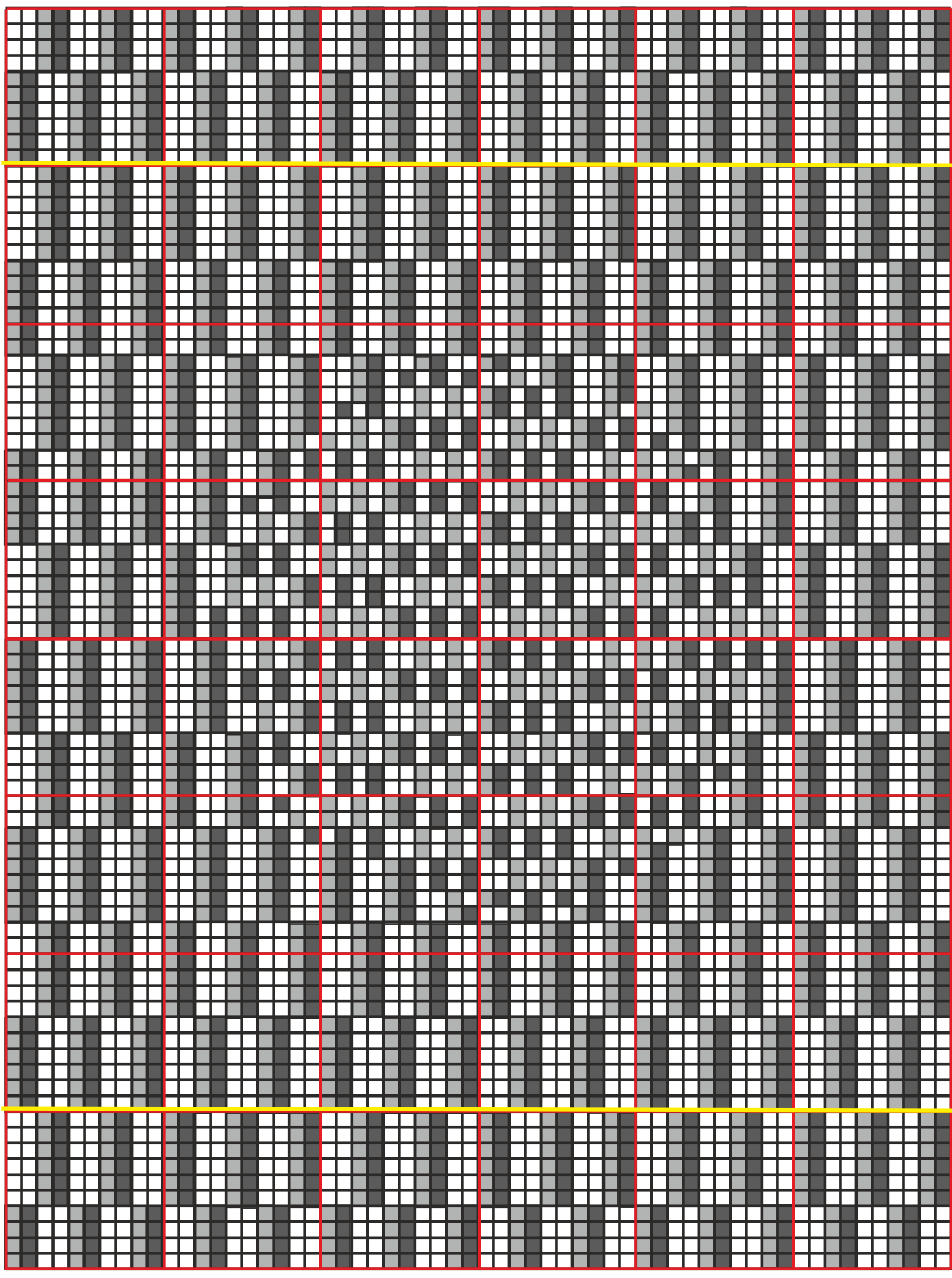
50

40

30

20

10



80

70

60

50

40

30

20

10



**THE WORLD OF  
ILLUSION KNITTING**

where nothing is quite what it seems

©Steve Plummer & Pat Ashforth 2015

Woolly Thoughts

166 Keighley Road, Colne, Lancashire, BB8 0PJ, England

[woollythoughts.com](http://woollythoughts.com)

All rights reserved