



Heart Illusion Cushion

A shadow knitting design

by

Steve Plummer & Pat Ashforth

from

Woollythoughts

When you look straight at this cushion you see stripes; when you look from an angle you see the heart and lettering.

Yarn (for one side of the cushion) : Approximately 140 metres (150 yards) DK in each of two contrasting colours

Needles : Use one or two sizes smaller needles than you would normally use for DK

Size : Approximately 40 cm (16") - to fit a 45 cm (18") cushion pad

Tension : Approximately 5 stitches to 2.5 cm (1") using garter stitch

Chart : This type of chart may be unfamiliar to you. Make sure you understand it before you begin.

There are 81 stitches and 81 ridges of knitting (1 ridge is equal to 2 rows). They are marked in groups of ten so that you can keep your place on the chart.

There are three colours on the chart but you are only using two colours of yarn. White on the chart represents purl stitches. You could be using either colour of yarn to work these stitches. The working colour is determined by the colour of the current ridge.

You always work two rows (one ridge) of the dark colour followed by two rows (one ridge) of the light colour.

The sequence of working is:

- Using Dark, knit
- Using Dark, follow the chart
- Using Light, knit
- Using Light, follow the chart

Each time you complete this sequence of four rows you have added two ridges.

Special note

The right side of the work is always knit. **The chart is only needed for, and only shows, the wrong-side rows.** When you look at the chart you are seeing the right side and need to work from left to right for wrong side rows.

You may find it easier to flip the chart so that you can see the wrong side and you will be working in the same direction as what you see.

Method

Ridge 1: Row 1: Cast on 81 stitches. (This counts as the first row.)

(Dark) Row 2: Knit all coloured squares and purl all white squares. (The chart shows p81)

Ridge 2: Row 1: Knit.

(Light) Row 2: Knit all coloured squares and purl all white squares. (The chart shows k81)

Ridge 3: Row 1: Knit.

(Dark) Row 2: Knit all coloured squares and purl all white squares. (The chart shows p81)

Repeat Ridges 2 & 3 three more times.

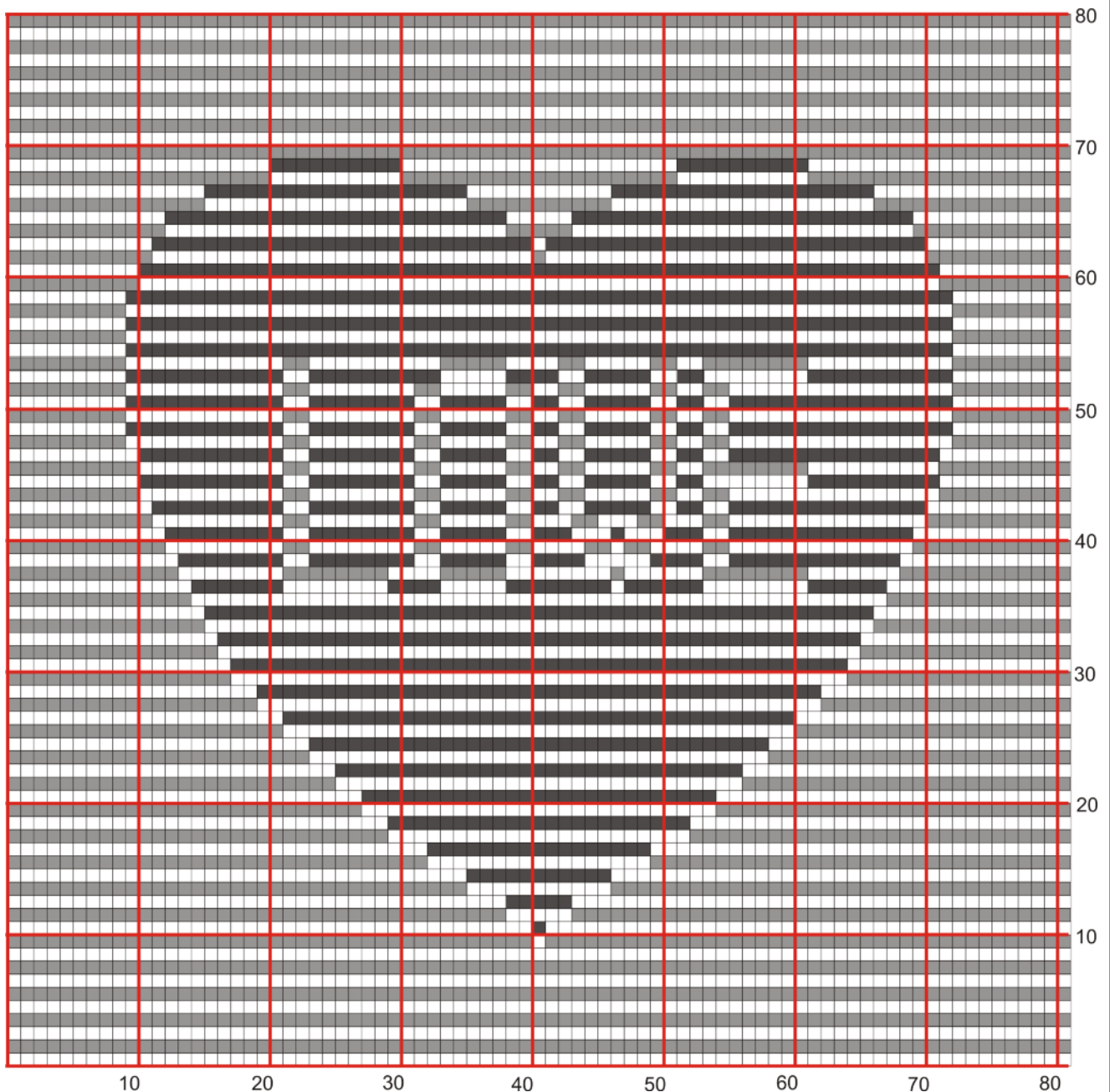
Ridge 10 Row 1: Knit.

(Light) Row 2: Knit all coloured squares and purl all white squares. (The chart shows k40, p1, k40)

Ridge 11 Row 1: Knit.

(Dark) Row 2: Knit all coloured squares and purl all white squares. (The chart shows p40, k1, p40)

Continue in this way, following the chart until you reach Ridge 81. Cast off on the second row of Ridge 81.



To neaten the sides of the square

Turn the work sideways and, using Light, pick up one stitch from the end of each ridge, all along the edge. Cast off loosely on the next row. Repeat along the other edge.

To complete the cushion

There are various ways to make the back of the cushion:

- Make another piece the same as the first.
- Repeat Ridges 2 & 3 over the whole piece. You will see only Light when you look from an angle.
- Reverse the colours. Knit odd-numbered ridges, purl even-numbered ridges. You will see Dark.
- Work in garter stitch throughout. The size will be almost the same and suitable for a cushion.

Whichever way you choose, stitch the two pieces together inserting the cushion pad before you close the final edge.

Note

Illusion designs should be as flat as possible to see them to best effect. Use the flattest cushion pad you can find.

Written instructions

If you prefer written instructions, cast on 81 stitches, using Dark and purl one row.

Change to Light for Ridge 2. Knit the right side row and follow the instructions for the wrong-side row.

Change colour after every ridge. Always knit the right-side row and follow the instructions for the wrong-side row.

Ridge	Colour	
1	Dark	p81
2	Light	k81
3	Dark	p81
4	Light	k81
5	Dark	p81
6	Light	k81
7	Dark	p81
8	Light	k81
9	Dark	p81
10	Light	k40, p1, k40
11	Dark	p40, k1, p40
12	Light	k38, p5, k38
13	Dark	p38, k5, p38
14	Light	k35, p11, k35
15	Dark	p35, k11, p35
16	Light	k32, p17, k32
17	Dark	p32, k17, p32
18	Light	k29, p23, k29
19	Dark	p29, k23, p29
20	Light	k27, p27, k27
21	Dark	p27, k27, p27
22	Light	k25, p31, k25
23	Dark	p25, k31, p25
24	Light	k23, p35, k23
25	Dark	p23, k35, p23
26	Light	k21, p39, k21
27	Dark	p21, k39, p21
28	Light	k19, p43, k19
29	Dark	p19, k43, p19
30	Light	k17, p47, k17
31	Dark	p17, k47, p17
32	Light	k16, p49, k16
33	Dark	p16, k49, p16
34	Light	k15, p51, k15
35	Dark	p15, k51, p15
36	Light	k14, p53, k14
37	Dark	p14, k7, p8, k4, p5, k8, p1, k6, p8, k6, p14
38	Light	k13, p8, k8, p4, k5, p8, k1, p6, k8, p7, k13
39	Dark	p13, k8, p2, k8, p2, k5, p2, k4, p5, k4, p2, k13, p13
40	Light	k12, p9, k2, p8, k2, p5, k2, p4, k2, p1, k2, p4, k2, p14, k12



Ridge	Colour	
41	Dark	p12, k9, p2, k8, p2, k5, p2, k3, p3, k1, p3, k3, p2, k14, p12
42	Light	k11, p10, k2, p8, k2, p5, k2, p3, k2, p3, k2, p3, k2, p15, k11
43	Dark	p11, k10, p2, k8, p2, k5, p2, k2, p2, k5, p2, k2, p2, k15, p11
44	Light	k10, p11, k2, p8, k2, p5, k2, p2, k2, p5, k2, p2, k2, p16, k10
45	Dark	p10, k11, p2, k8, p2, k5, p2, k2, p2, k5, p2, k2, p8, k10, p10
46	Light	k10, p11, k2, p8, k2, p5, k2, p2, k2, p5, k2, p2, k8, p10, k10
47	Dark	p10, k11, p2, k8, p2, k5, p2, k2, p2, k5, p2, k2, p2, k16, p10
48	Light	k9, p12, k2, p8, k2, p5, k2, p2, k2, p5, k2, p2, k2, p17, k9
49	Dark	p9, k12, p2, k8, p2, k5, p2, k2, p2, k5, p2, k2, p2, k17, p9
50	Light	k9, p12, k2, p8, k2, p5, k2, p2, k2, p5, k2, p2, k2, p17, k9
51	Dark	p9, k12, p2, k8, p2, k5, p2, k2, p2, k5, p2, k2, p2, k17, p9
52	Light	k9, p12, k2, p8, k2, p5, k2, p2, k2, p5, k2, p2, k2, p17, k9
53	Dark	p9, k12, p2, k10, p5, k4, p2, k5, p2, k2, p8, k11, p9
54	Light	k9, p12, k2, p10, k5, p4, k2, p5, k2, p2, k8, p11, k9
55	Dark	p9, k63, p9
56	Light	k9, p63, k9
57	Dark	p9, k63, p9
58	Light	k9, p63, k9
59	Dark	p9, k63, p9
60	Light	k10, p61, k10
61	Dark	p10, k61, p10
62	Light	k11, p29, k1, p29, k11
63	Dark	p11, k29, p1, k29, p11
64	Light	k12, p26, k5, p26, k12
65	Dark	p12, k26, p5, k26, p12
66	Light	k15, p20, k11, p20, k15
67	Dark	p15, k20, p11, k20, p15
68	Light	k20, p10, k21, p10, k20
69	Dark	p20, k10, p21, k10, p20
70	Light	k81
71	Dark	p81
72	Light	k81
73	Dark	p81
74	Light	k81
75	Dark	p81
76	Light	k81
77	Dark	p81
78	Light	k81
79	Dark	p81
80	Light	k81
81	Dark	Cast off

Pat Ashforth and Steve Plummer

166 Keighley Road, Colne, Lancashire, BB8 0PJ

woollythoughts.com

Heart Illusion Cushion - For tablet users

Use this page on a pdf reader. Enlarge it until you can see a band of twenty ridges and the numbers below. Scroll across when you want to see the rest of the row. Cross out each ridge as you complete it and you will always be able to find your place.

