

Woolly Thoughts

THE WORLD OF
ILLUSION KNITTING
where nothing is quite what it seems



Merry Christmas

*An illusion knitting banner or scarf
designed by*

Steve Plummer & Pat Ashforth

Merry Christmas

When you look straight at the knitting you see only stripes; when you look from the side you see the words.

The photograph shows a banner but it would be very easy to make the strip wider and longer to use as a scarf.

Yarn

100 metres (110 yards) White DK and 170 metres (190 yards) Red DK. This includes yarn for the red border shown but does not include any extra required for optional mounting. It does not include any extra needed for the white edging, which is optional.

I used Stylecraft Special DK in Matador and an unknown sparkly white yarn.

Any thickness of yarn can be used but this could change the overall size of the panel.

Needles

The effect works best if the work is fairly tight. Try size 3.25 mm but adjust if necessary. A scarf needs to be softer than a banner so might need larger needles.

Size and tension

Approximately 15 cm x 110 cm (6" x 44") , working at a tension of approximately 24 stitches to 10 cm (4") using garter stitch

Using the chart

You may never have seen charts like this before. Make sure you understand it before you begin.

There are three colours on the chart but you are only using two colours of yarn.

White on the chart always represents purl stitches. It is not always your white yarn. You could be using either colour of yarn to work these stitches. The working colour is determined by the colour of the current ridge. All coloured-in squares are knit stitches. Use Red to knit the ridges shown in light grey; use White to knit the ridges shown in dark grey.

You always work two rows (one ridge) of Red followed by two rows (one ridge) of White

The sequence of working is:

- Using Red, knit
- Using Red, follow the chart
- Using White, knit
- Using White, follow the chart

Each time you complete this sequence of four rows you have added two ridges.

Special note

The right side of the work is always knit. The chart is only needed for wrong-side rows. When you look at the chart you are seeing the right side and need to work from left to right for wrong side rows.

Temporary cast on

We recommend beginning with a temporary cast on. This is not essential but it does allow you to go back and finish the first side in the same way as the second side.

Merry Christmas - Method

Every stripe on the chart represents two rows of knitting. Every right side row is knit. You only need the chart for the wrong side rows.

Using waste yarn make a temporary cast-on of 24 stitches.

- Ridge 1 (Red):** Row 1: Knit.
Row 2: Follow the chart. (The chart shows all knit.)
- Ridge 2 (White):** Row 1: Knit.
Row 2: Follow the chart. (The chart shows all purl.)
- Ridges 3 - 10** Repeat ridges 1 and 2 four times more.
- Ridge 11 (Red):** Row 1 Knit.
Row 2 Follow the chart. Knit the coloured stitches and purl the white stitches. (The chart shows k6, p5, k5, p2, k6)
- Ridge 12 (White):** Row 1: Knit.
Row 2: Follow the chart. Knit the coloured stitches and purl the white stitches. (The chart shows p6, k5, p5, k2, p6)
- Ridge 13 (Red):** Row 1 Knit.
Row 2 Follow the chart. Knit the coloured stitches and purl the white stitches. (The chart shows k4, p2, k5, p2, k5, p2, k4)
- Ridge 14 (White):** Row 1 Knit.
Row 2 Follow the chart. Knit the coloured stitches and purl the white stitches. (The chart shows p4, k2, p5, k2, p5, k2, p4)
- Ridges 15 -18** Repeat ridges 13 and 14 twice more.
- Ridge 19 (Red):** Row 1 Knit.
Row 2 Follow the chart. Knit the coloured stitches and purl the white stitches. (The chart shows k6, p2, k5, p5, k6)
- Ridge 20 (White):** Row 1 Knit.
Row 2 Follow the chart. Knit the coloured stitches and purl the white stitches. (The chart shows p6, k2, p5, k5, p6)

Continue in this way to the end of the *Christmas* chart and continue with the *Merry* chart.

Finishing the banner

Use Red for all edges.

1. After completing the chart, knit 7 rows garter stitch. Cast off loosely.
2. Unfasten the temporary cast-on and knit 7 rows garter stitch. Cast off loosely.
3. Turn the work sideways and pick up one stitch from each ridge end all along. Complete to match ends.
4. Repeat for the other long edge.

Decorative edging (Optional)

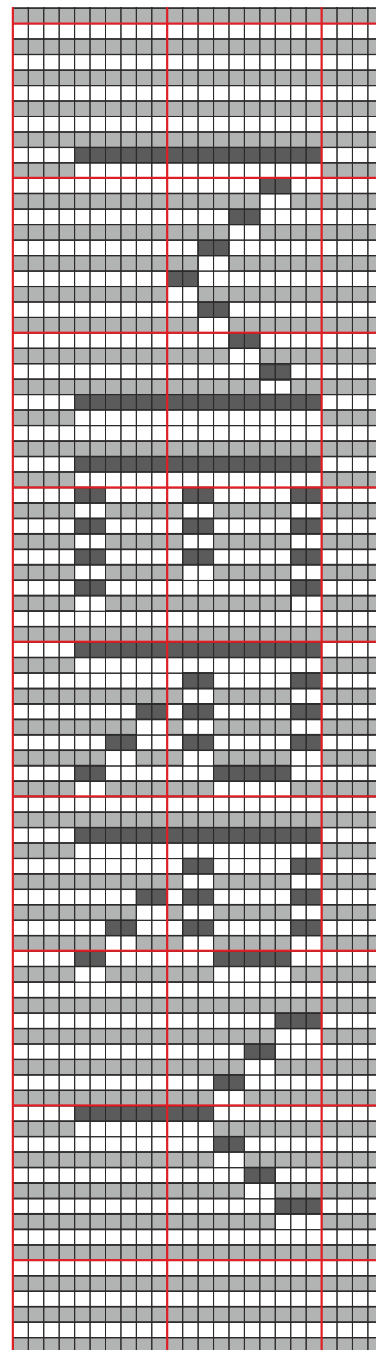
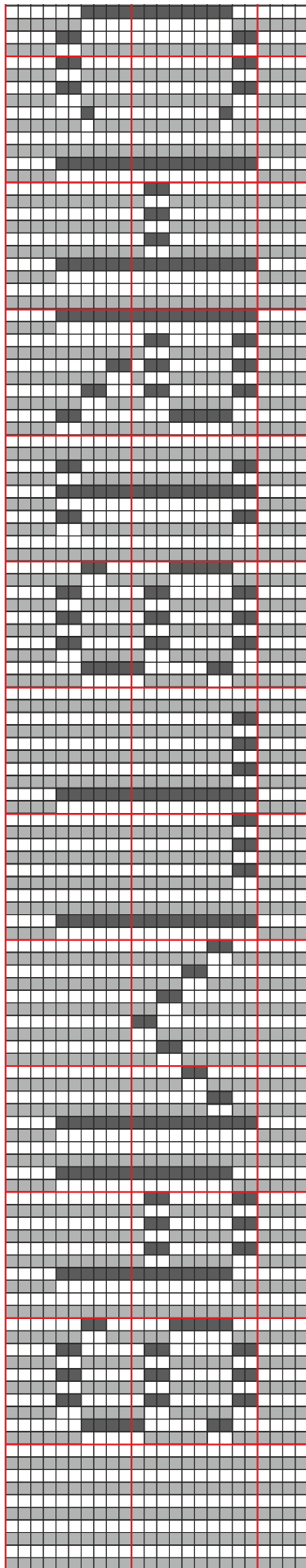
Any decorative edging can be added. I used a crochet edging:

Join in yarn; (1dc in top of cast off edging, 2ch, skip 1, 1dc in next stitch) all round; complete with slip-stitch.

Temporary hanging

If you want to hang your banner and still be able to move it easily, attach a length of Velcro to a strip of wood of the same length as the banner and press the knitting gently onto it.

Alternatively, you could knit a few extra garter ridges on the long top edge and fold over the extra piece to make a channel for a hanging rod.



The chart should be continuous but has been split to fit the page. Begin at the bottom of the long section.



©Steve Plummer & Pat Ashforth 2017

Woolly Thoughts®

166 Keighley Road, Colne, Lancashire, BB8 0PJ, England

woollythoughts.com

All rights reserved