

Woolly Thoughts

THE WORLD OF
ILLUSION KNITTING
where nothing is quite what it seems

Illusion Techniques & Samples



Illusion Checkerboard

*An illusion knitting sample for use as an afghan square or washcloth
designed by*

Steve Plummer & Pat Ashforth

Illusion Checkerboard

A simple checkerboard design, where you see two colour stripes from directly in front but squares in two colours when you look from an angle. The square could be used for an afghan block or a washcloth.

Yarn

You can use any thickness of smooth(ish) yarn. The illusion will show up however thick or thin the yarn. It may not show if you use a textured, or variegated, yarn. Your choice of yarn will affect the overall size of the square.

The square in the photos was made in DK yarn and used about 45 metres (50 yards) in each of the two colours.

Needles

The effect works best if the work is fairly tight. Try needles one size smaller than recommended for your chosen yarn.

Size and tension

These will vary according to the yarn you choose. Using DK yarn it will be approximately 25 cm (10") square.

Using the chart

There are 48 ridges (not rows!). Ridges and stitches are marked, with red lines, in groups of ten so that you can keep your place on the chart. Use markers on your needle to correspond.

There are three colours on the chart but you are only using two colours of yarn.

White on the chart always represents purl stitches. You could be using either colour of yarn to work these stitches. The working colour is determined by the colour of the current ridge. All other coloured stitches are knit stitches. Use Light to knit the light grey stitches; use Dark to knit the dark grey stitches.

You always work two rows (one ridge) of Dark followed by two rows (one ridge) of Light.

The sequence of working square 1 is:

- Using Dark, knit
- Using Dark, follow the chart
- Using Light, knit
- Using Light, follow the chart

Each time you complete a sequence of four rows you have added two ridges.

Special note

The right side of the work is always knit. The chart is only needed for wrong-side rows. When you look at the chart you are seeing the right side and need to work from left to right for wrong side rows.

Note about other patterns

Our more complex patterns often have several pages of charts. They are given in various formats so you can choose which to use on paper, on your screen, or on a tablet or phone.

Illusion Checkerboard - Method

Every stripe on the chart represents two rows of knitting. Every right side row is knit. You only need the chart for the wrong side rows.

Using Dark cast on 48 stitches.

- Ridge 1 (Dark):* Row 1: The cast on row counts as the first row of the first ridge.
Row 2: Follow the chart. Knit the coloured stitches and purl the white stitches.
(The chart shows k8, p8, k8, p8, k8, p8)
- Ridge 2 (Light):* Row 1: Knit.
Row 2: Follow the chart. Knit the coloured stitches and purl the white stitches.
(The chart shows p8, k8, p8, k8, p8, k8)
- Ridges 3 - 8:* Repeat ridges 1 and 2 three times.
- Ridge 9 (Dark):* Row 1: Knit.
Row 2: Follow the chart. Knit the coloured stitches and purl the white stitches.
(The chart shows p8, k8, p8, k8, p8, k8)
- Ridge 10 (Light):* Row 1: Knit.
Row 2: Follow the chart. Knit the coloured stitches and purl the white stitches.
(The chart shows k8, p8, k8, p8, k8, p8)
- Ridges 11 - 16:* Repeat ridges 9 and 10 three times.
- Ridges 17 - 24:* Repeat ridges 1 and 2 four times.
- Ridges 25 - 32:* Repeat ridges 9 and 10 four times.
- Ridges 33 - 40:* Repeat ridges 1 and 2 four times.
- Ridges 41 - 48:* Repeat ridges 9 and 10 four times, casting off on the last row.

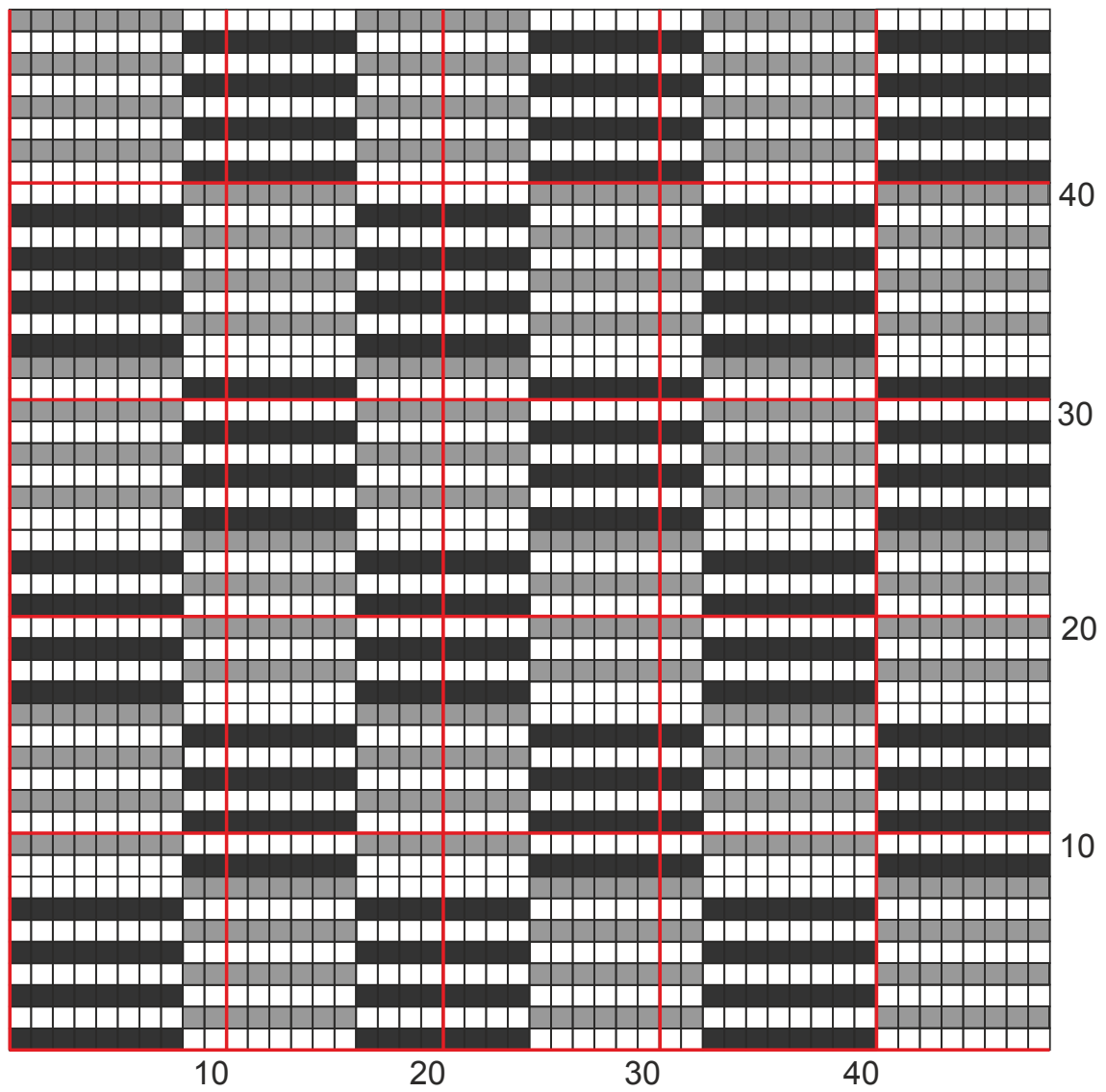
To neaten the edges

Turn the work sideways and pick up one stitch from the end of each ridge. Cast off loosely on the next row.

If you would like wider borders, work a few ridges of garter stitch before you begin the chart and end with garter stitch to match. Add the same number of ridges of garter stitch on the sides before casting off.

This is what you see when you look straight at the knitting.





©Steve Plummer & Pat Ashforth 2015

Woolly Thoughts

166 Keighley Road, Colne, Lancashire, BB8 0PJ, England

woollythoughts.com

All rights reserved